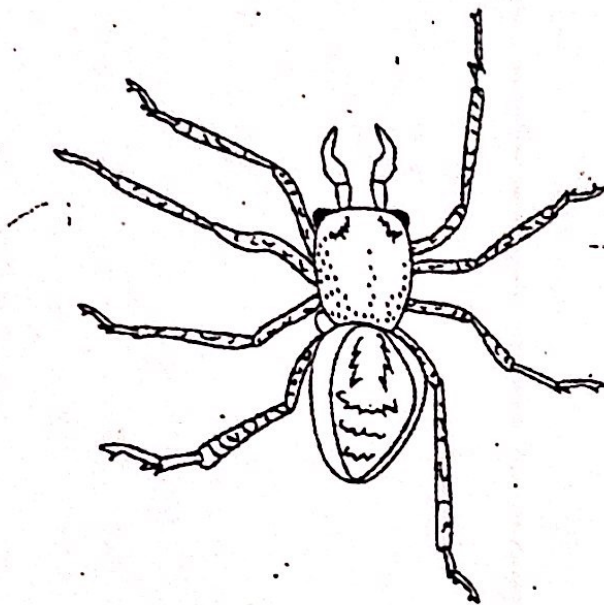
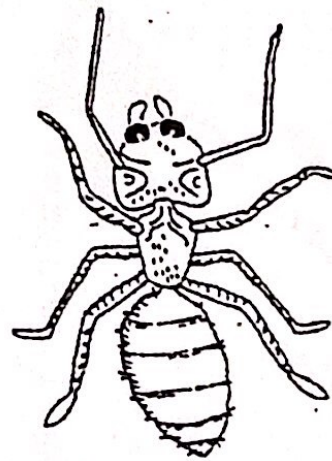


Animal A



Animal B



1. Which of the following statements is a quantitative observation you can make about the animals shown in the diagram?
- A Both animals are invertebrates that live on land.
 - B Animal A has a narrow body with a pattern on its back and extremely long legs.
 - C Animal B has a body with three main sections, two antennae on its head, and three pairs of legs.
 - D Both animals have a similar appearance, but Animal A appears bigger than Animal B.